



Public Broadcasting IP Speaker User Manual

S21P



Copyright and disclaimer

Copyright

Copyright© **Sahabtec keeps all rights reserved.**

Any enterprises or individuals cannot extract, copy and spread in any form of this document without our written permission. In accordance with the law, copying includes translating the document into other languages or conversing into other formats.

When this document is transmitted in network media, Sahabtec allows downloading or printing for private use. Any parts of the document are not allowed to be modified or used for commercial purposes. Sahabtec will not assume any responsibility for the injuries and losses caused by any unauthorized modification or conversion of the document.

Declaration

Information regarding this guide is subject to change without any notice.

This manual provides accurate statement, information and recommendation to the largest extent, but will not guarantee for any express and implies. Users should take full responsibility for the application of products. Sahabtec will not make any guarantee for this manual, including but not limited to warranties for implies merchantability and particular purposes. Sahabtec does not assume any responsibility for indirect or consequential loss caused by the misuse of this manual.

About this manual

Thank you for choosing Public Broadcasting IP Speaker S21P. This IP Speaker is specially designed for the user under the public environment with fashionable appearance and complete functions. This manual aims to help you quickly use IP Speaker S21P. Before use, please read the packing list and safety notes section of this manual, communicate with the system administrator to confirm if the current network environment can meet the requirements of configuring the phone. If this is your first time to use IP Speaker S21P, we recommend that you should read the quick installation guide and product technical manual. The document can be downloaded from the following website: <http://www.sahabtec.com>.

Tables of Contents

Copyright and disclaimer	2
1. Getting Started.....	4
1.1 Outline	4
1.2 Product Features	4
1.3 Technical Information.....	5
2. Telephone installation	6
2.1 Ceiling entrance specification.....	7
2.2 Installation of speaker equipment	7
3. Configuration of speaker.....	7
3.1 Login web management of speaker	8
3.2 Network.....	9
3.2.1 WIFI Settings.....	9
3.2.2 WIFI Status.....	9
3.2.3 LAN Settings	10
3.2.4 VPN Settings.....	10
3.3 SIP Accounts	11
3.4 Multicast settings	11
3.5 Voice.....	12
3.6 Maintains for the speaker	13
3.6.1 Log	13
3.6.2 Speaker setup	14
3.6.3 VLAN setup	16
3.6.4 Password.....	16
3.6.5 Factory Defaults Setting.....	17
3.6.6 Auto provision.....	17
3.6.7 FTP Upgrade.....	18
3.6.8 TFTP Upgrade.....	18
3.6.9 HTTP Upgrade	19
3.6.10 Reboot.....	19
3.7 Language	20

1. Getting Started

1.1 Outline

S21P Public Broadcasting Wired and Wireless-based IP Phone, a new generation of IP speakers. The Multicast functions settings of the device is more user-friendly than previous devices, the incidental tools and functions of this product will make Multicast easier to manage, notify, expand, and monitor.

The device adopting well-designed and elegant color (white), makes it look more beautiful, more suitable for installation on most of the ceiling without any influence. This device is more suitable for large and small public broadcasting projects e.g. schools, hospitals, stadiums, hotels, shopping malls, commercial buildings, venues, theaters, government buildings scene.

1.2 Product Features

- 3 VoIP (SIP) accounts.
- Support up to 20 groups multicast functions.
- LEDs and function keys embedded design, LEDs reflects the device work status, function keys can be used to adjust the volume, broadcast IP and a key to restore the factory values.
- Built-in microphone and external 3.5mm microphone interface can be switched freely.
- Support remote web management and maintenance, such as account maintenance, software upgrades, and the volume control.
- POE power supply (802.3af/at) which cannot coexist with WIFI series.
- WIFI Series is easy to be installed with strong expansion, its RJ45 port having a dual-use nature can be used as LAN port which is the same with the use of ordinary series when people manually turn off WIFI.

NOTE: If speaker voice is up to 5 level. For avoid power shortages and lead it restart, you need to use power adapter or support 802.3at's POE power adapter.

1.3 Technical Information

Phone features
<p>WEB Multi-language ; Support 3 accounts line</p> <p>Active / passive support; Support calls holding, calls waiting and calls transfer; Call transfer (busy turn, blind turn, consulting turn) , mute, don't disturb , Auto answer , three-way conference, the volume control and so on ; support IP direct dial without account , Support up to 20 groups multicast functions simultaneously (the priority decreases from 1 to 20)</p>
Network parameters
<p>Support SIP V1 (RFC2543) ,V2 (RFC3261) ; Support DNS SRV (RFC3263) ; Support STUN network penetration ; Support 3 DTMF model: In-band,、 RFC2833、 SIP INFO ;</p> <p>Support Network model : Static IP/DHCP/PPPoE ; built-in DNS/TFTP/FTP terminal ;</p> <p>Support NAT/DHCP service ; Support SIP and RTP QOS</p>
Security
<p>Support VLAN (802.1pq) , LLDP , VPN (L2TP/OPEN_VPN) ; Support TLS(Transport Layer Security) protocol ; Support information authentication mechanism MD5 ; Support AES encryption protocol ; Support phone locks, support the Admin/User level management mode</p>
Audio features
<p>Wideband encoding: G.722 ; Narrow band encoding:G.711μ/A, G723.1, G726, G.729AB , iLBC ; Support VAD,CNG,AEC,AGC etc. audio processing ; Full duplex speaker, with automatic echo elimination (AEC).</p>
Physical properties

One RJ-45 10/100M Ethernet interfaces(LAN) , LAN port is for the use of ordinary model ;
LAN/PC port is for WS series, when WIFI function opening, it is PC port , when WIFI function closing, it is LAN port ; One power adapter; Speaker Output : 13Watts ; Power : DC 12V/1A ;

ABC keys function definitions:

A key: volume increase; B key: quickly restore the factory value by pressing the button 20 seconds (refer to soft recovery, not hard recovery), press 1 time means broadcasting the current IP address; C key: volume decrease.

ABC-LEDs keys function definitions:

A (network) Green slow flash - network connection is fail; The light off - the network connection is normal; B (multicast) The light off - multicast is idle; red flash - multicast is busy; C (SIP Account) The light off - the registration is successful / idle; blue flash - Account busy; blue flashing slowly - registration is fail;
Flash is 1s / times; slow flash is 2s / times

Carton packaging

Size : 8.5"x6" ; The mask width 215mm, Height65mm , The cover width x160mm,
Heightx135mm , Total height:155mm ; Net weight:1.1kg Gross weight:2.0kg ;

Product Certification



Platform Compatibility Test (non-certificate)

ZTE/Alcatel-Lucent/Asterisk/Broadsoft/Metaswitch/Yeastar/Avaya/3CX/Elastix/HUAWEI etc.

2.Telephone installation

Generally, the system administrator will connect your new S21P Speaker to the corporate IP telephony network. If not, please refer to the following instructions.

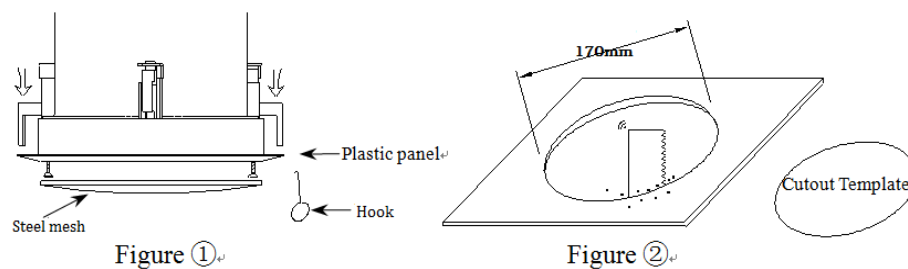
Open the S21P Speaker boxes, carefully contrast the packing list, check if the related accessories of S21P phone are complete, the packing list as follows:

- 1 set S21P Speaker
- 1 steel mesh iron cover
- 12 screws
- 1 small pull hook
- 1 Quick Guide

In compliance with the following procedure, S21P Speaker can be installed into the ceiling.

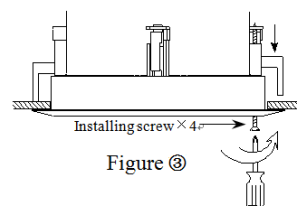
2.1 Ceiling entrance specification

Cut out an installation hole of $\varnothing 170\text{mm} \sim \varnothing 180\text{mm}$ on the ceiling (Figure ②), Notice: The figure is just for your reference, as below



2.2 Installation of speaker equipment

- 1、 open the cover (use a small hook to make steel mash up) (Figure ①);
- 2、 Through the cut-down hole, build the speaker in, after the built-in, use screw driver to remount the four binding post. (Figure ③);



- 3 、 when installation completed, load the steel mash back to speaker, then electrify and test it.

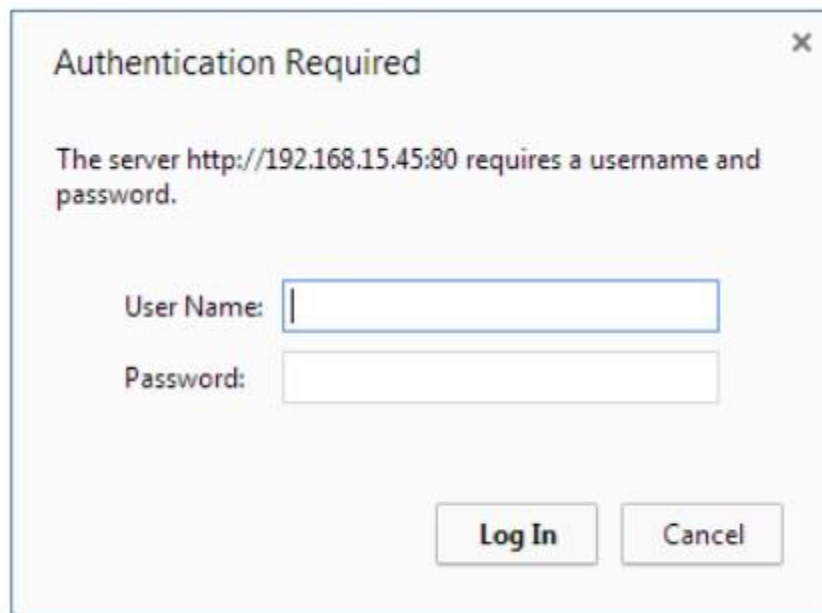
3. Configuration of speaker

Before you adjust the speaker, you need to know the IP address of the speaker. There a way you could learn how to get the IP address below. IP address will be gained by DHCP; you could press the second button from the left side. And it will let you know the speaker

IP.

3.1 Login web management of speaker

Once you input the IP address on the web browser and tape enter key on the keyboard, then a login screen will pop up from the speaker equipment. You need to input user name and password. The username and password of XonTel S21P is **admin / xontel**



The image shows a web browser dialog box titled "Authentication Required". It contains the text: "The server http://192.168.15.45:80 requires a username and password." Below this text are two input fields: "User Name:" and "Password:". At the bottom right of the dialog are two buttons: "Log In" and "Cancel".

After the login to the administrate web page of the speaker will pop up.



The image shows the XonTel S21P web management interface. At the top left is the XonTel logo. Below it is a vertical menu with the following options: "- System Info", "- Network", "- SIP Account", "- Paging Setting", "- Audio", and "- Speaker Maint". To the right of the menu, the text "IPSpeaker WEB Software" is displayed. Below that, the model "S21P" is shown in large blue letters. At the bottom right, the software version "V3.0.0.0-4788" and hardware version "V2.x.x" are listed, along with the system upgrade date "2013-12-27".

The setting and parameter of each option will be describe as follow.

3.2 Network

This option is used for the network setting, please notice that if you have WIFI speaker, then you could set the LAN and VPN.

3.2.1 WIFI Settings

Please note that the option is just support item S21P. The below operation will guide you how to connect the WIFI speaker to WIFI network, if you know WIFI hotspot SSID, you could input in the text box are, you could also search "SITE SURVEY" according to the hotspot.

- System Info
- Network
 - + WIFI Setting
 - + WIFI Status
 - + LAN Setting
 - + VPN Setting
- SIP Account
- Paging Setting
- Audio
- Speaker Maint

SSID	BSSID	Channel	Type	Encrypt	Signal	Select
ALJAN	00a0f8d97585	9	b	WEP	38	<input checked="" type="radio"/>
HAJDYAH TECH	442b038c09bb	6	big	WPA-PSK	32	<input type="radio"/>
AIC	00090fe5a0b9	3	big	WPA-PSK/WPA2-PSK	26	<input type="radio"/>
khald-i-hobar	589835eaf901	6	big	WPA2-PSK	24	<input type="radio"/>
FORSANA	c8d719c9ca72	1	big	WPA2-PSK	22	<input type="radio"/>
AUJANLINK2	00a0f8df6a1	2	b	WEP	20	<input type="radio"/>
AuI_WIFI	22090fe5a0b9	3	big	WPA/WPA2	18	<input type="radio"/>
AuI_WIFI	22090fe5b649	3	big	WPA/WPA2	16	<input type="radio"/>
DELTA Company	4ceddee2dc5c	11	big	WPA-PSK	14	<input type="radio"/>
ATCO	00a0f8de7920	12	b	WEP	14	<input type="radio"/>

3.2.2 WIFI Status

Please note that the option is just support item S21P. Once the device connects to the WIFI hotspot, you could use the below operation to check the WIFI connecting status.

- System Info
- Network
 - + WIFI Setting
 - + WIFI Status
 - + LAN Setting
 - + VPN Setting
- SIP Account
- Paging Setting
- Audio
- Speaker Maint

WIFI Status

Wireless Configuration

System Version: V2.0

WIFI MAC: BC:F6:85:FE:9E:E8

Mode: AP Client

SSID: HAJDYAH TECH

Encryption: WPA-PSK

BSSID: 44:2b:03:8c:09:bb

State: Connected

Signal: 35

3.2.3 LAN Settings

This option is used for setting speaker IP address, as shown below.

LAN Port

IP settings

☐ DHCP

Hostname(Option 12):

Manufacturer(Option 60):

☒ Static IP

IP Address:

Netmask:

Gateway:

☐ PPPoE

Username:

Password:

MTU: Default: 1500

DNS Settings

☒ Automatic

☐ Manual DNS

Primary DNS:

Secondary DNS:

MAC Address

MAC Address: 00:26:8b:01:7b:3c

Port Management Settings

HTTP Port:

Telnet Port:

Socket5 Proxy Server

Socket5 Proxy Server: ☒ off ☐ on

Server IP:

Port:

Anonymous Login: ☒

Username:

Password:

Please Note: Changing the default HTTP Port (80) will require using the new port number to access the IP Speaker web interface. Please note that changes require a reboot. Use the following format when not using the default HTTP (http://ip address:portnumber).

3.2.4 VPN Settings

If your speaker install into VPN network, then you need to set the VPN as below.

- System Info
- Network
 - + WiFi Setting
 - + WiFi Status
 - + LAN Setting
 - + VPN Setting
- SIP Account
- Paging Setting
- Audio
- Speaker Maint

VPN Setting

Enable VPN: ☐

VPN Type:

L2TP

VPN Server Addr:

VPN User Name:

VPN Password:

3.3 SIP Accounts

XonTel S21P IP speaker could be set three SIP accounts, user name, password and server address is necessary. If information are correct and available, after submitting, there will be a register to the server.

Account1

SIP Settings

Enable: ☒

Account Mode:

Display Name:

Username: *

Authenticate Name: *

Password:

Label:

SIP Server:

Secondary server:

OutboundProxy Server:

Secondary OutboundProxy Server:

Polling Interval Time Of Registration: s Default Value: 32s
Range: 20s~60s

NAT Traversal:

STUN Server:

BLA: ☒ off ☐ on

BLA Number:

Call Method: ☒ SIP ☐ TEL

Subscribe Period: Default: 1800s, Min: 120s

Register Expire Time: Default: 3600s, Min: 40s

DNS-SRV: ☒ off ☐ on

SIP Transport: ☒ UDP ☐ TCP ☐ TLS

Call

Amount Of Line Account Used: (Default: 2)

Do Not Disturb: ☒ off ☐ on

Anonymous Call: ☒ off ☐ on

Anonymous Call Rejection: ☒ off ☐ on

Use Session Timer: ☒ off ☐ on

Session Timer: (min: 150s)

Allow-events: ☒ off ☐ on

Registered NAT: ☐ off ☒ on

Ring Type:

UDP Keep-alive Message: ☒ off ☐ on

UDP Keep-alive Interval: (15-60s)

Security

SIP Encryption: ☒ off ☐ on

RTP Encryption: ☒ off ☐ on

Encryption Algorithm:

Encryption Key:

3.4 Multicast settings

XonTel S21P IP speaker could be set 20 groups multicast. You could add them and input several IP address and ports according to the below diagram. Notice: The priority of multicast is from 1-20. The highest degree is 1, the lowest degree is 20.

Paging Setting

Paging 1:	<input checked="" type="radio"/> off <input type="radio"/> on	Group IP: <input type="text"/>	Port: <input type="text" value="10000"/>
Paging 2:	<input checked="" type="radio"/> off <input type="radio"/> on	Group IP: <input type="text"/>	Port: <input type="text" value="10000"/>
Paging 3:	<input checked="" type="radio"/> off <input type="radio"/> on	Group IP: <input type="text"/>	Port: <input type="text" value="10000"/>
Paging 4:	<input checked="" type="radio"/> off <input type="radio"/> on	Group IP: <input type="text"/>	Port: <input type="text" value="10000"/>
Paging 5:	<input checked="" type="radio"/> off <input type="radio"/> on	Group IP: <input type="text"/>	Port: <input type="text" value="10000"/>
Paging 6:	<input checked="" type="radio"/> off <input type="radio"/> on	Group IP: <input type="text"/>	Port: <input type="text" value="10000"/>
Paging 7:	<input checked="" type="radio"/> off <input type="radio"/> on	Group IP: <input type="text"/>	Port: <input type="text" value="10000"/>
Paging 8:	<input checked="" type="radio"/> off <input type="radio"/> on	Group IP: <input type="text"/>	Port: <input type="text" value="10000"/>
Paging 9:	<input checked="" type="radio"/> off <input type="radio"/> on	Group IP: <input type="text"/>	Port: <input type="text" value="10000"/>
Paging 10:	<input checked="" type="radio"/> off <input type="radio"/> on	Group IP: <input type="text"/>	Port: <input type="text" value="10000"/>
Paging 11:	<input checked="" type="radio"/> off <input type="radio"/> on	Group IP: <input type="text"/>	Port: <input type="text" value="10000"/>
Paging 12:	<input checked="" type="radio"/> off <input type="radio"/> on	Group IP: <input type="text"/>	Port: <input type="text" value="10000"/>
Paging 13:	<input checked="" type="radio"/> off <input type="radio"/> on	Group IP: <input type="text"/>	Port: <input type="text" value="10000"/>
Paging 14:	<input checked="" type="radio"/> off <input type="radio"/> on	Group IP: <input type="text"/>	Port: <input type="text" value="10000"/>
Paging 15:	<input checked="" type="radio"/> off <input type="radio"/> on	Group IP: <input type="text"/>	Port: <input type="text" value="10000"/>
Paging 16:	<input checked="" type="radio"/> off <input type="radio"/> on	Group IP: <input type="text"/>	Port: <input type="text" value="10000"/>
Paging 17:	<input checked="" type="radio"/> off <input type="radio"/> on	Group IP: <input type="text"/>	Port: <input type="text" value="10000"/>
Paging 18:	<input checked="" type="radio"/> off <input type="radio"/> on	Group IP: <input type="text"/>	Port: <input type="text" value="10000"/>
Paging 19:	<input checked="" type="radio"/> off <input type="radio"/> on	Group IP: <input type="text"/>	Port: <input type="text" value="10000"/>
Paging 20:	<input checked="" type="radio"/> off <input type="radio"/> on	Group IP: <input type="text"/>	Port: <input type="text" value="10000"/>

3.5 Voice

You can manage the speaker volume ranks and microphones which showed in the following table. Please note that in most cases, if you open the microphone and switch to level 7, then don't use speaker volume more than level 4, unless you can ensure that your coverage is small or noise reduction level is high.

NOTE: If speaker voice is up to 5 level. For avoid power shortages and lead it restart, you need to use power adapter or support 802.3at's POE power adapter.

Audio

Tone
 Select Country:

Output Volume (1~9)
 SpeakerPhone Volume:

Input Volume (0~7)
 SpeakerPhone Mic Volume:

Voice Codec
 Payload Length: ms
 High Rate of G723.1: ☒

Jitter Buffer
 Type: ☒ Adaptive ☐ Fixed
 Min Delay: Max Delay:
 Normal Delay:

Other
 VAD: ☐ Echo Suppression Mode: ☐
 SideTone: ☐

Ring
 Ring Type:

Uploading Ring Tone

 (Please upload a ring tone with G711A audio coding, Maximum 10 rings and the total sizes must less than 150k.)

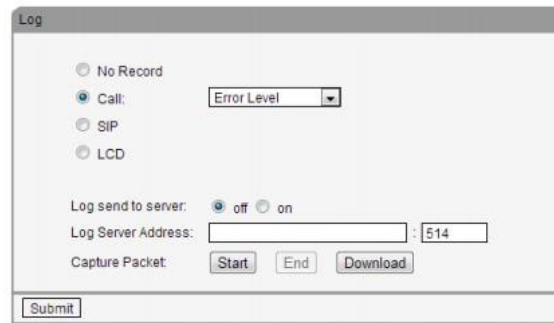
Audio Codecs :

3.6 Maintains for the speaker

Sometimes, you need to check the speaker's status and usage, or configure some extra options. According to the below, you can reconfigure the speaker or view maintenance logs for more information.

3.6.1 Log

For most well-known system, log file will provide the speaker behavior change and some causes of records, information contained in the log files you need to investigate the problem, if you need to get information from it, then it can upload the log file to the specified server.



3.6.2 Speaker setup

Most of the following list will serve as a backup, you can set a time and date only and other options can be ignored directly.

Speaker Setting	
Basic	
Called No AnswerTime:	<input checked="" type="checkbox"/> 70 s (Min:20, Max:1800)
Caller No AnswerTime:	<input checked="" type="checkbox"/> 180 s (Min:90, Max:1800)
DTMF:	<input checked="" type="radio"/> RFC 2833 <input type="radio"/> Inband <input type="radio"/> SIP Info <input type="radio"/> Auto
Pound Send Method:	<input checked="" type="radio"/> # <input type="radio"/> %23
RFC 2833 PayLoad:	101
BackLight:	<input type="radio"/> off <input type="radio"/> Always On <input checked="" type="radio"/> timer 60 s (Min:1, Max:255)
Keyboard Lock:	Disabled
PSTN Setting	
PSTN Ring Type:	<input type="radio"/> PSTN Ring <input checked="" type="radio"/> VOIP Ring
PSTN Prefix Code:	
VOIP Prefix Code:	
Hook:	<input type="radio"/> off <input checked="" type="radio"/> on
Hook Frequency:	500 (Default:500 ms;min:100 ms;max:1600 ms)
Qos	
SIP Qos:	26 (0-63)
Voice Qos:	46 (0-63)
Call	
BLF Transfer In Taking	<input checked="" type="radio"/> off <input type="radio"/> on
BLF Transfer Mode	<input checked="" type="radio"/> Blind Transfer <input type="radio"/> Attended Transfer
Hot Line Function:	<input checked="" type="radio"/> off <input type="radio"/> Immediately Hot Line <input type="radio"/> Delay 5 s (5-30)
Hot Number:	
Call Waiting:	<input type="radio"/> off <input checked="" type="radio"/> on
Call Waiting Tone:	<input checked="" type="radio"/> off <input type="radio"/> Play on currently active device Frequency: 10 s (5-60)
Auto Answer:	<input type="radio"/> off <input checked="" type="radio"/> on <input type="radio"/> Turn On But Filter This Group: NONE
Auto Answer Mode:	<input checked="" type="radio"/> Hands Free <input type="radio"/> Handle <input type="radio"/> Headset
Pickup Function:	<input type="radio"/> off <input checked="" type="radio"/> on
Pickup Code:	123
Message:	*97
Fuzzy Search:	<input checked="" type="radio"/> off <input type="radio"/> on
Booking Voicemail:	No
Play Voicemail Tone:	<input checked="" type="radio"/> off <input type="radio"/> on
Miss Call Display:	<input type="radio"/> off <input checked="" type="radio"/> on
Call List Save:	<input type="radio"/> off <input checked="" type="radio"/> on
DND Softkey:	<input type="radio"/> off <input checked="" type="radio"/> on
Play Hangup Tone:	<input checked="" type="radio"/> off <input type="radio"/> on
Transfer Code:	<input checked="" type="radio"/> off <input type="radio"/> on Number:
Conference Exit Result:	<input checked="" type="radio"/> Disconnect All <input type="radio"/> Others Remain Connected
Return code when refuse:	603(Decline)
Return code when DND:	603(Decline)
Flash hook time(<=800ms):	500
VOIP Call Forward	
Always:	<input checked="" type="radio"/> off <input type="radio"/> on Number:
If Busy:	<input checked="" type="radio"/> off <input type="radio"/> on Number:

If No Answer: ☒ off ☐ on Number:

Ring Frequency: (Default: 15s, Max: 15s)

Set Time Mode: ☐ SNTP ☒ SIP Server ☐ PSTN ☐ Manual

SNTP Server: ☒ List
☐ Manual

SNTPSecondary server: ☒ List
☐ Manual

Update Interval(seconds):

Daylight Savings Time Mode: ☐ always off ☐ always on ☒ Auto

Time Format: ☒ 24 Hour ☐ 12 Hour

Date Format:

Time Zone-GMT:

Manual Setting
 Year Month Day Hour Minute Second

Other

QoS: Diff-Serv or Precedence

Check When Upgrade Software: BLF Light:

Headset Mode: ☒ Normal ☐ Seat Mode

Ring Type On Seat Mode: ☒ Headset ☐ Speaker

Network Packet Mirroring:

3.6.3 VLAN setup

If you need your speaker work under the situation of VLAN, you need to configure the VLAN information, otherwise you will not be able to operate the speaker or play any announcements.

- System Info
- Network
- SIP Account
- Paging Setting
- Audio
- Speaker Maint
 - + Log
 - + Speaker Setting
 - + VLAN Setting
 - + Password
 - + Default Set
 - + Auto Provision
 - + FTP Upgrade
 - + TFTP Upgrade
 - + HTTP Upgrade
 - + Reboot

VLAN Setting

VLAN

Enable Vlan: ☐

LAN Port

VID: (0~4094)

Priority: (0~7)

PC Port

VID: (0~4094)

Priority: (0~7)

3.6.4 Password

If you need to change the speaker's default password, you need to configure the password information. Please note that the password change should be ensured safety and not distribute to anyone, unless they are allowed to interact with the speaker.



A web form titled 'Password'. It contains four input fields: 'Username:' with 'admin' entered, 'Old Password:', 'New Password:', and 'Confirm Password:'. Below the fields are two radio buttons: 'Administrator' (selected) and 'User'. A 'Submit' button is at the bottom.

3.6.5 Factory Defaults Setting

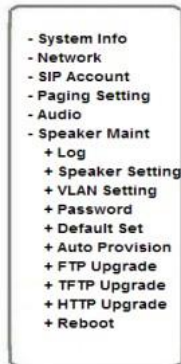
The following will direct you how to set the factory defaults. Please note that factory default setting will erase all the original configuration info, so please be cautious to use this function.



A web form titled 'Default Setting'. It contains a warning message: 'When click this button this equipment will restore to the default status' and 'Pay Attention: it will take effect on next reboot.' Below the text is a 'Reset to Factory Setting' button.

3.6.6 Auto provision

The auto provision function makes the speaker read the related configuration file by itself. The operation below will show the related operation, such as, name or address of Sever, verify by user name or password (optional), testing period, reboot testing, etc.



Auto Provision

Auto Provision: ☒ on ☐ off

Option: 66 (Default: 66, Min: 1, Max: 254)

Protocol: TFTP

Software Server URL: TFTP://192.168.15.100

Username:

Password:

☒ Auto Download Software

☒ Auto Download Enterprise Phonebook

☒ Auto Download Personal Phonebook

☒ Booting Checked

Disable the Speaker while booting checking: ☒ off ☐ on

Auto Provision Frequency: 168 Hour (Default: 7 days, Max: 30 days)

Auto Provision Time: None

Auto Provision Next Time: Wed Dec 4 16:38:37 2013 [Reset Timing](#)

AES Enable: ☒ off ☐ on

AES Key:

[Auto Provision Now](#)

[Submit](#)

3.6.7 FTP Upgrade

You can use FTP/TFTP/HTTP to upgrade new firmware and the software of speaker. The following will direct you if use FTP to upgrade



FTP Upgrade (Attention: Do not cut off the electricity when Upgrade!)

Server IP:

Filename:

Username:

Password:

Software Upgrade: [Upgrade](#)

Kernel Upgrade: [Kernel Upgrade](#)

Note: It's no necessary to input filename when backup.

Configuration: [Update](#) [Backup](#)

Phone Book: [Update](#) [Backup](#)

EXT Module: [Update](#) [Backup](#)

3.6.8 TFTP Upgrade

The following will direct you if use TFTP to upgrade.

- System Info
- Network
- SIP Account
- Paging Setting
- Audio
- Speaker Maint
 - + Log
 - + Speaker Setting
 - + VLAN Setting
 - + Password
 - + Default Set
 - + Auto Provision
 - + FTP Upgrade
 - + TFTP Upgrade
 - + HTTP Upgrade
 - + Reboot

TFTP Upgrade (Attention: Do not cut off the electricity when Upgrade!!)

Server IP:
Filename:
Software Upgrade:
Kernel Upgrade:

Note: It's no necessary to input filename when backup.

Configuration:
Phone Book:
EXT Module:

3.6.9 HTTP Upgrade

The following will direct you if use HTTP to upgrade.

- System Info
- Network
- SIP Account
- Paging Setting
- Audio
- Speaker Maint
 - + Log
 - + Speaker Setting
 - + VLAN Setting
 - + Password
 - + Default Set
 - + Auto Provision
 - + FTP Upgrade
 - + TFTP Upgrade
 - + HTTP Upgrade
 - + Reboot

HTTP Upgrade (Attention: Do not cut off the electricity when Upgrade!!)

HTTP Upgrade:
Select a File:

Software Upgrade:
Kernel Upgrade:
Configuration:
Log:
All Config File:

3.6.10 Reboot

The following will direct you if rebooting speaker. Please note that do not rebooting speaker unless hooking or no reaction situation which is rare occurrence.

- System Info
- Network
- SIP Account
- Paging Setting
- Audio
- Speaker Maint
 - + Log
 - + Speaker Setting
 - + VLAN Setting
 - + Password
 - + Default Set
 - + Auto Provision
 - + FTP Upgrade
 - + TFTP Upgrade
 - + HTTP Upgrade
 - + Reboot

TFTP Upgrade (Attention: Do not cut off the electricity when Upgrade!!)

Server IP:
Filename:
Software Upgrade:
Kernel Upgrade:

Note: It's no necessary to input filename when backup.

Configuration:
Phone Book:
EXT Module:

3.7 Language

The following will direct you how to change language with the speaker.

English(English) ▼

⇒

Chinese(Chinese)

English(English)

French(French)

Italian(Italian)

Polish(Polish)

Portuguesa(Portuguesa)

Portuguesa-Brasil(Brasil)

Russian(Russian)

Spanish(Spanish)

Turkish(Turkish)