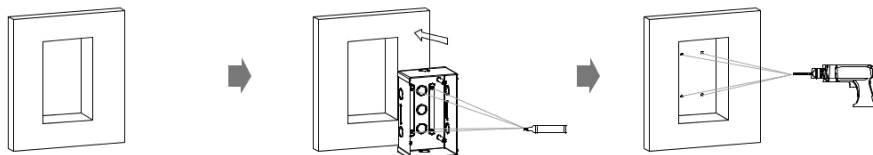


Installation

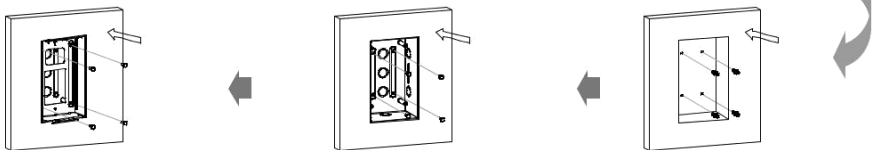
Step 1: Box Installation



Dig out a square hole (height*width*depth=155*95.5*65mm).
Note: The size of the hole should be a little larger than recommended value that it can accommodate all needed cables.

Insert the embedded box into the hole and make sure the cables of the device can route through the cable hole. Then mark the four screw holes of the wall embedded box on the wall.

Take down the embedded box, then use a hand drill with 5mm diameter bit to make holes in the marked positions.

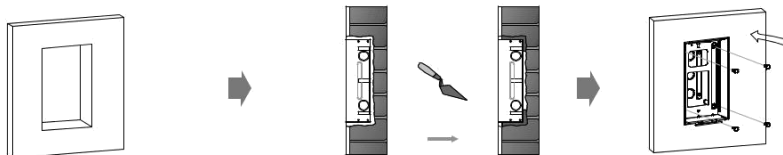


Use four M4x10 screws to fix the flush-mounting bracket on the embedded box.

Place the embedded box into the square hole until the edges of which align to the wall and make all cables go through the cable hole. Fix the embedded box with four ST4x20 screws. Then use cement or non-corrosive structural adhesives to fill the gap between the wall and embedded box.

Insert four screw fixing seats into the holes you drilled.

Or you can choose another simple method without fixing ST4x20 screws



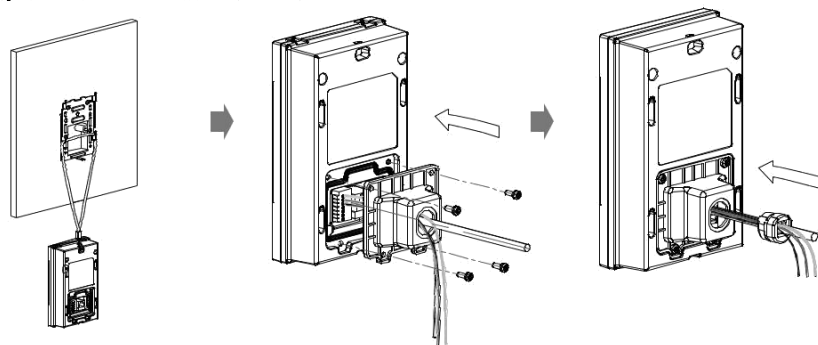
Dig out a square hole (height*width*depth=155*95.5*65mm) for inserting the embedded box.

Use cement or non-corrosive structural adhesives to fill the gap between the wall and embedded box. Wait the adhesive material desiccation, go to the next step.

Use four M4x10 screws to fix the flush-mounting bracket on the embedded box.

Note: The size of the hole should be a little bigger than recommended value that it can accommodate all needed cables.

Step 2: Back cover Installation

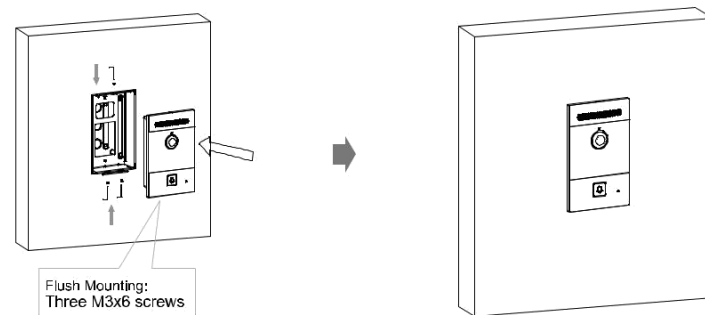


For convenient wiring, hang XT-10P on the flush-mounting bracket with rope.

Make cables go through the back cover, connecting to the corresponding interfaces of the main board. Fasten the back cover with four M3x8 screws.

Make cables go through the cable buckle, and then press the cable buckle into the back cover.

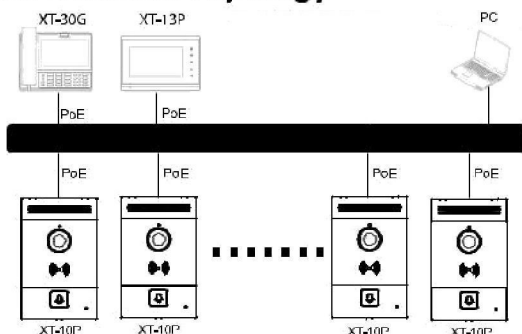
Step 3: Device Mounting



Place the device into the flush-mounting bracket until the edges of which align to the wall. Then pull the device downward and ensure the groove of which hooks to the lock catches of the back box. Use the Allen wrench to tighten the device with the M3 x6 screws.

Finish the Installation.

Application Network Topology



IP Announcement

1. While XT-10P starts up normally, hold the call button for several seconds after the Status LED turns blue, voice system will enter IP announcement mode.
2. In announcement mode, the IP address will be announced periodically.
3. Press Call Button again to quit the announcement mode.
4. In announcement mode, phone announces "IP 0.0.0.0" if no IP address is gained.

Configuration

1. Access the Web UI: Input the IP address into web browser to configure the phone.
2. Account Registration: On web UI, go to the path: **Account** → **Basic** page Register Account and fill in the account information. (*Please refer to user manual for more information*)
3. Configure the Push Button: On web UI, go to the path: **Intercom** → **Basic** → **Push Button** to configure the call number.
4. Configure the code to open the relay: On web UI, go to the path: **Intercom** → **Relay** → **Relay ID/DTMF** and choose the DTMF code number in corresponding area.

Operation

Make a call:

1. Press the call button to call indoor SIP Phone.
2. During the talk, called party can press pre-configured code number to unlock the door.

Receive a call:

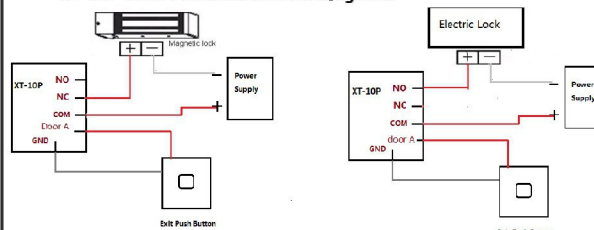
XT-10P supports Auto Answer by default. Incoming call from indoor device will be answered automatically.

Unpacking

Please make sure the package contains the following items:



XT-10P Door Lock connection diagram:



Interface Description on PCB Board:

GND	NC	Relay B
12V	COM	Relay A
RS485B	NO	
RS485A	X	
DOORA	NC	
GND	COM	
DOORB	NO	



Product Overview

